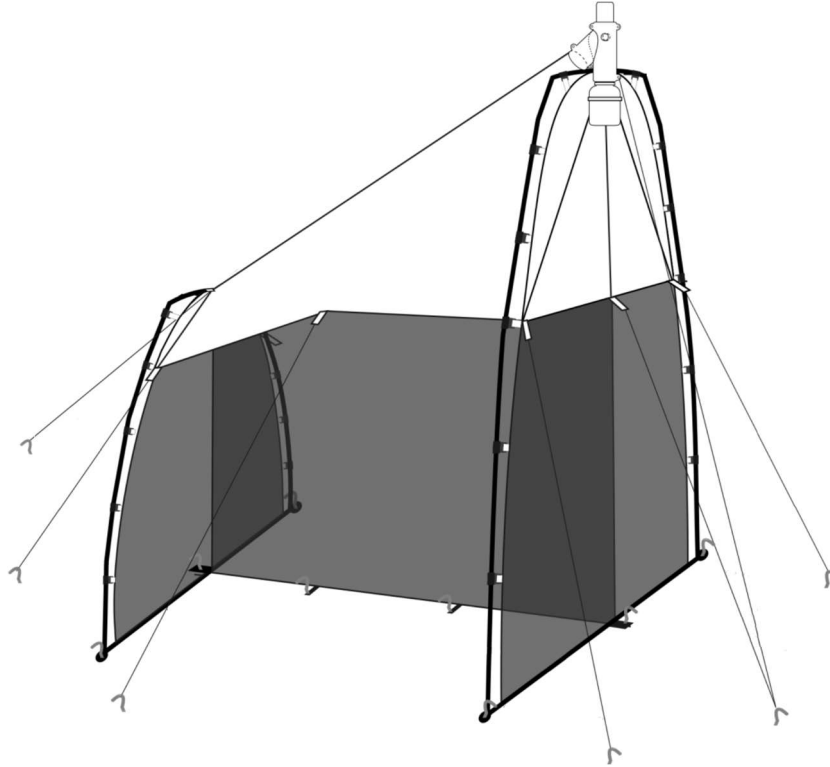


Trap Set-Up Guide

What you'll need:

- Malaise trap kit
- Flagging tape
- BugQuest: Science in Progress* sign
- Reusable cable ties
- Prepared collection bottle - 2 labels attached and filled with saltwater mixture



Before you set-up the trap:

1. Watch our Trap Set Up Video: <https://www.youtube.com/watch?v=sU9rW71f5ZA>
2. Based on the key dates and local weather conditions, determine the best starting dates for you and make sure you can collect the bottle on the same day every week.

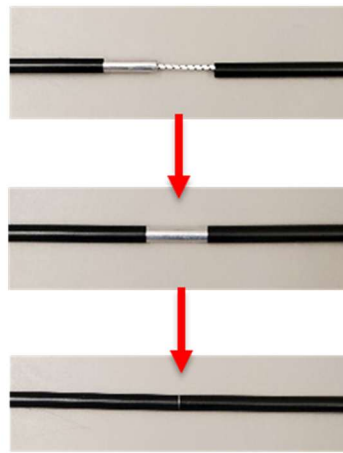


Trap set-up:

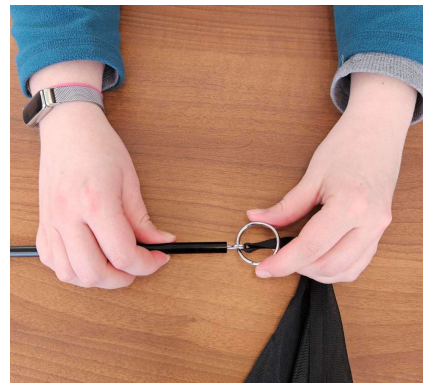
3. Bring the **Malaise trap kit** and the **prepared week #1 bottle** (see Preparation Guide and Collection Guide) to the selected site.
4. Lay the trap tent flat on the ground with the white side facing up.



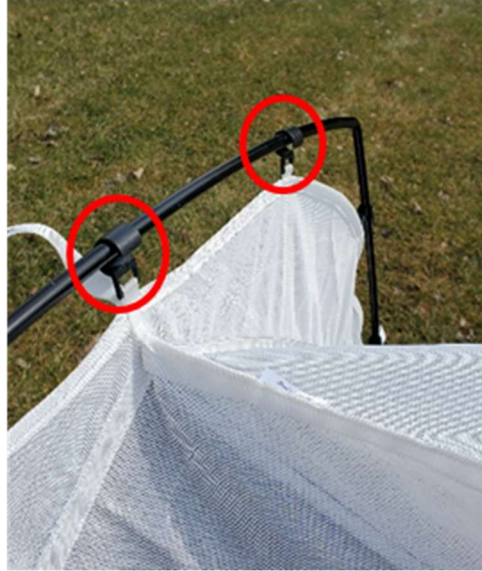
5. Assemble the short and long tent poles. Ensure each segment of the poles is securely fitted to each other.



6. Start with the long tent pole and the tall end of the trap. Insert the spring pins found at the bottom corners into the pole.



7. Clip the hooks on the trap around the pole to form a mesh panel.



8. Repeat steps 6 and 7 for the short end of the trap using the short tent pole.
9. With two people, stand up both the tall and short sides of the trap. Ensure that the trap head is over the long pole and fasten it with the white strap already attached to the trap. Tie a support rope to the lower attachment point on the trap head and stake the other end of the rope into the ground with a metal tent peg.



10. At the short side of the trap, tie a support rope to the white strap loop and stake the other end of the rope into the ground.

- Adjust the base of the trap so the trap body is fully stretched. Stake the trap to the ground using the metal tent pegs (8 pegs total), ensuring the 2 attachment points in the middle panel are also staked down. See images and diagram below.



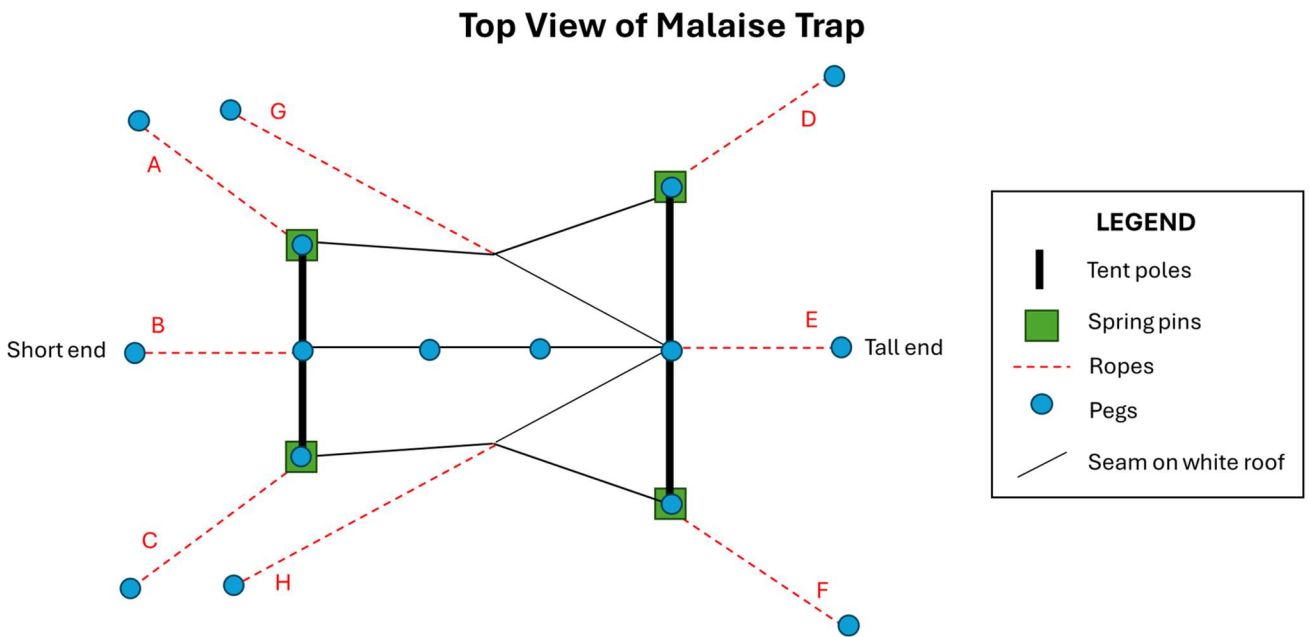
- Attach the remaining support ropes and adjust them to achieve proper trap shape and tension (8 ropes total). Secure the support ropes to the ground with the metal tent pegs.

See the diagram below: there are 3 support rope attachments at the short end (A, B, & C), 3 at the tall end (D, E, & F), and 1 on either side (G & H).

For the side support ropes, follow the white seam line along the trap roof to achieve the best shape.

This helps funnel flying insects toward the trap head.

Quest Tip – If there are trees nearby, tie the support ropes to them instead of using pegs.



13. Attach flagging tape (provided) to each support rope to help prevent tripping.

💡 **Quest Tip** – If needed, place additional flagging tape around the entire trap area for visibility.

14. Once the trap is upright, attach the *BugQuest: Science in Progress* sign to the tall part of the trap (or a wall or stake) using the reusable cable ties, extra rope, or tape. You may use a hole punch to create attachment points as needed; 3-4 attachment points are recommended.

15. The Malaise trap is now set up! Take some pictures of your site and record the GPS coordinates for when you fill out the **Digital Field Collection Form** at the end of the collection season.



16. Continue to the **Collection Guide** to attach the **week #1** bottle.

💡 **Quest Tip** – Return to the trap the next day to make sure it is still standing properly and adjust if needed.